



Daikin *iLINQ* DDC Controller for Light Commercial Systems

The Daikin *iLINQ* Controller is a factory-installed solution to provide intelligent control for Daikin Light Commercial rooftop units* (RTUs). *iLINQ* provides physical inputs and outputs to control and monitor the RTU and features a graphic web interface for remote access (via a computer or tablet). Equipped with built-in BACnet™ IP and MS/TP interface or it can be used with an optional LonWorks® card that is available to integrate the Daikin RTU with building automation systems (BMS).



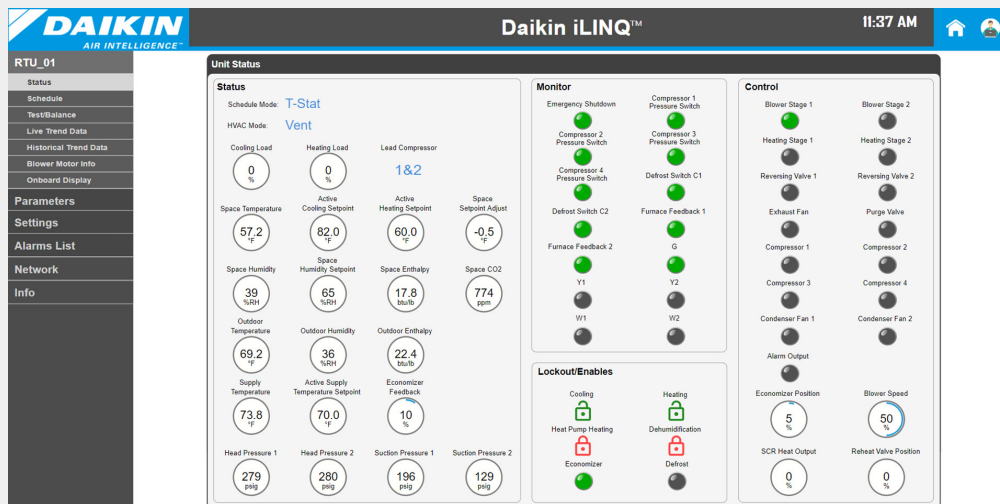
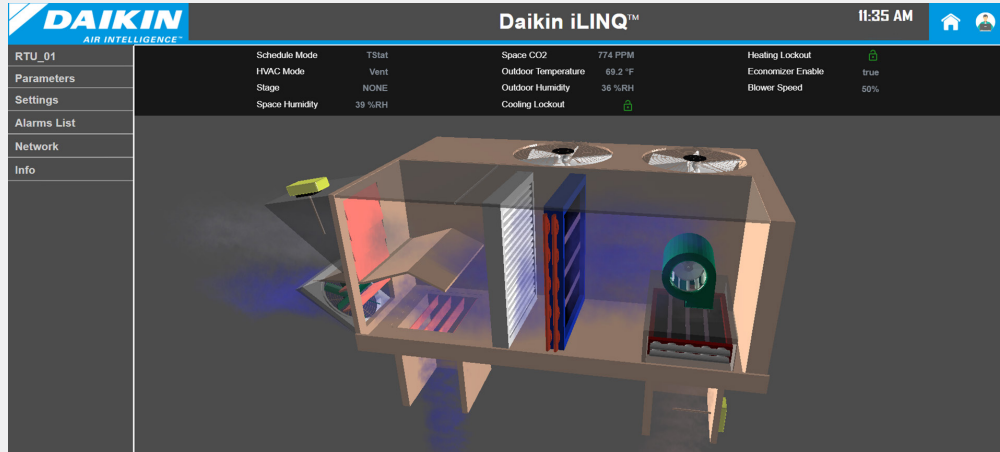
Features

- » Compatible with gas/electric staging, electric SCR, and heat pump heating types
- » Built-in Control Sequences:
 - Single-speed, two speed, and variable-speed (inverter) blowers
 - 1 or 2 stages of heating, and 1 or 2 stages of cooling
 - Defrost Mode
 - Demand Control Ventilation
 - California Title 24 certified economizer control
 - Optimal Start/Stop
 - Emergency shutdown interlock and alarm
 - 7-days schedule and holiday schedules with Automatic DST Adjustment
 - Selectable thermostat mode allowing for connection to a standard thermostat that bypasses the DDC control logic
- » Built-in LCD display for local commissioning, control, and monitoring
- » Remote access with graphic web interface for commissioning, control, and monitoring through Ethernet
- » Data trend log available for download
 - Logs 72 predetermined variables with user-defined sampling time
 - Stored in CSV format for up to 4 MB of data (stores 33 days of data with a 2-minute sampling time)
 - Live trend log data can be viewed through the web interface
- » BMS integration options
 - BACnet™ IP or BACnet™ MS/TP communication
 - Optional LonWorks® Card

*Select models. For more information, visit www.daikinac.com.









Graphic Web Interface

The *iLINQ* Controller provides a graphic web interface for easy commissioning, control, and monitoring through Ethernet.



Optional Sensors

Wired sensors are available to be used with the *iLINQ* DDC Controller for remote sensing.

ROOM TEMPERATURE SENSOR	ROOM TEMPERATURE SENSOR WITH HUMIDITY	OUTSIDE AIR TEMPERATURE SENSOR	OUTSIDE AIR TEMPERATURE SENSOR WITH HUMIDITY
			
DUCT TEMPERATURE SENSOR	DUCT CO ₂ SENSOR	SPACE CO ₂ SENSOR	DUCT HUMIDITY SENSOR
			

To learn more about the Daikin *iLINQ* DDC Controller:

Contact your local Sales Representative, visit www.daikin-city.com or www.daikinac.com



Our continuing commitment to quality products may mean a change in specifications without notice.

© 2021 **DAIKIN NORTH AMERICA LLC** · Houston, Texas · USA · www.daikincomfort.com or www.daikinac.com

PF-iLINQDDC_04-21